

1. Features of the Glystro® Motor Curtain Track System

- Easy installation
- Compact and light weight design
- Silent and smooth belt drive operation
- Manual override capability
- Infrared, radio and standard switch control options
- Ceiling and wall mount compatible
- 5 year warranty



An example of ceiling mount



Manual opening/closing

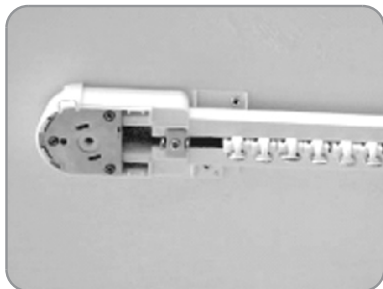


Remote control options

2. Product Specifications

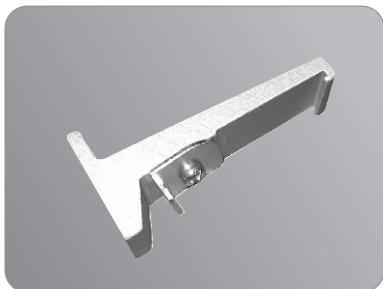
Weight of Motor Unit	(710 g) 1.56 lbs.
Voltage	AC input: 110 VAC, 60 Hz
	DC output: 24 VDC (transformer)
Current	Less Than 1.2 A
Power consumption	Max. 30W
Opening/closing speed	(20 cm/sec) 7.87 in/sec

3. Accessories



CARRIERS

The number of carriers used depends on drapery type/size.
(Aprox. 3 per ft.)



WALL BRACKETS

The number of wall brackets used depends on length of rail.
(Aprox. 2 per system, plus additional one per four ft.)



CEILING BRACKETS – Standard

The number of ceiling brackets used depends on the length of the rail. (Aprox. 2 per system, plus additional one per four ft.)



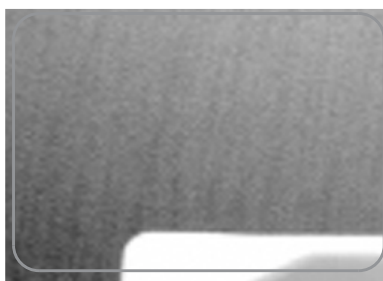
CEILING BRACKETS– One Touch

The number of ceiling brackets used depends on the length of the rail. (Aprox. 2 per system, plus additional one per four ft.)



CEILING BRACKETS– Double One Touch

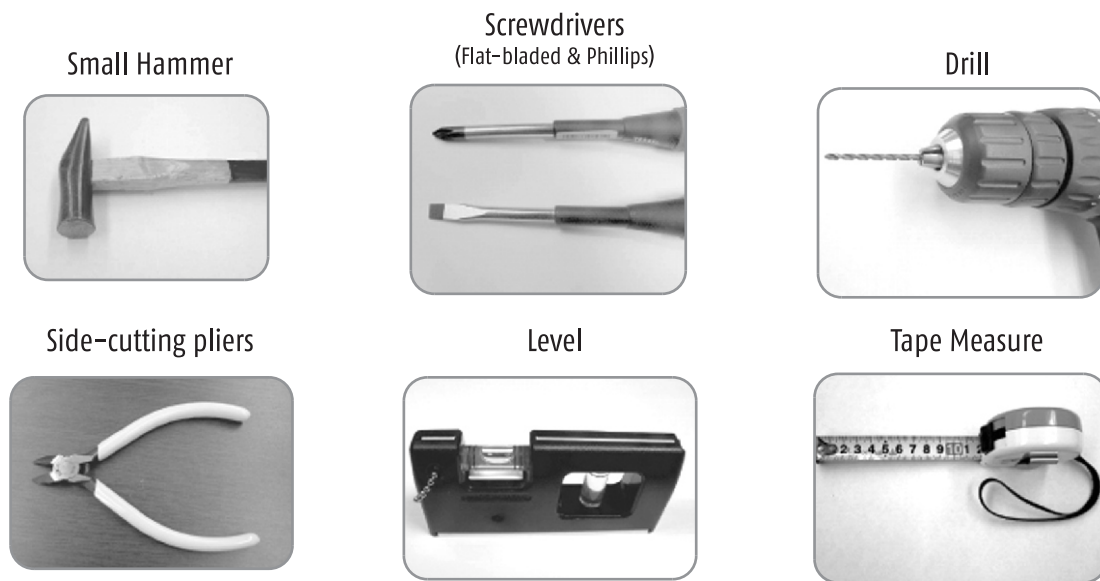
The number of ceiling brackets used depends on the length of the rail. (Aprox. 2 per system, plus additional one per four ft.)



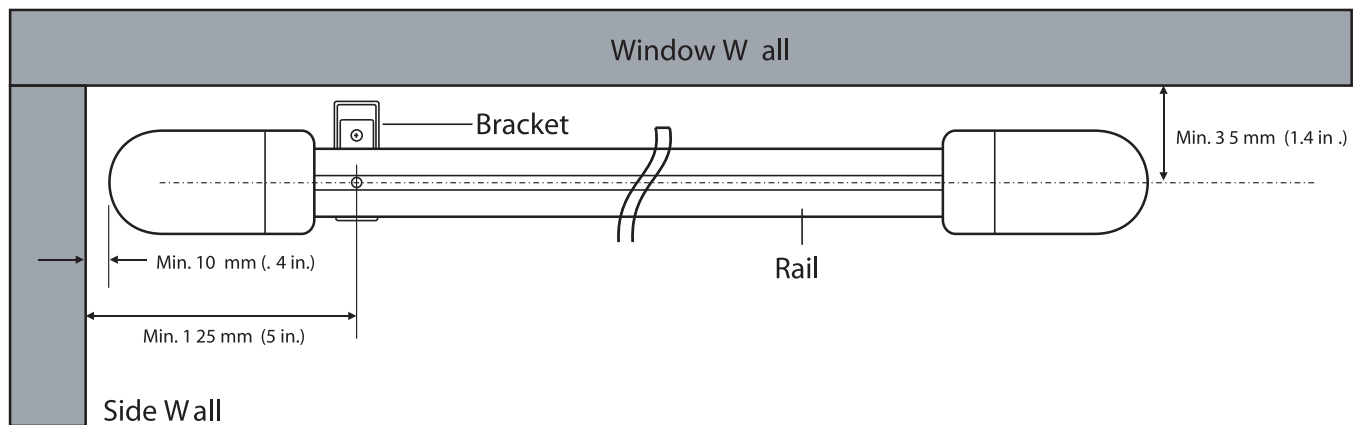
DRAPERY END HOOK

For a single-draw curtain: 1 piece (min.)
For double-draw curtains: 2 pieces (min.)

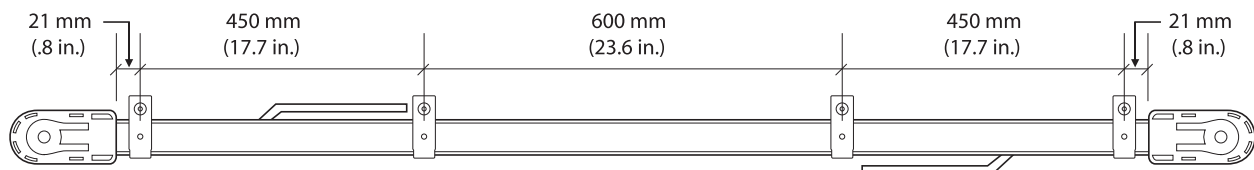
4. Tools Required for Installation



5. Mounting Recommendations



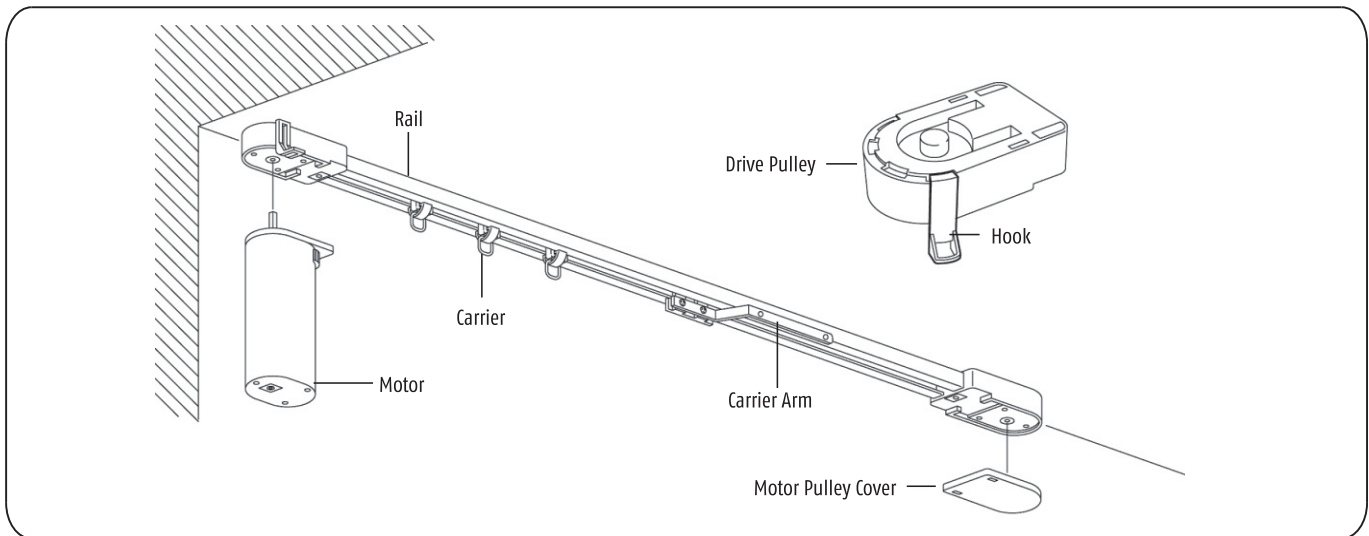
Mark the ceiling wall for bracket location keeping a distance of 600mm or less between brackets.



CAUTION

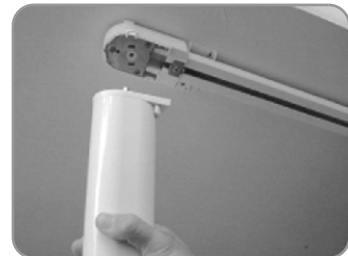
The ceiling wall structure supporting the drapery must be strong enough to withstand the total weight (max. 66 lbs.) including the drapery rail, motor, and drapery. If required, the ceiling structure should be reinforced on site before installation.

Set Up Diagram of the Complete System



6. Standard Installation Procedure

- (A) Install drapery hook to drive pulley.
- (B) Mark bracket location on wall or ceiling. Mount brackets, then secure drapery rail to brackets.
- (C) Align motor shaft with pulley hole.
- (D) Attach motor unit to pulley engaging lever until it clicks.



7. Power Connection and Test Run

Firmly insert the DC power plug into the receptacle at the bottom of the motor unit.



CAUTION

Check that the motor unit is securely locked to the rail.
If it is not locked securely, the motor may become separated.

8. General Safety Precautions

- (A) This product should be installed by a qualified installer.
- (B) Do not connect power to the motor unit before installation is complete.
- (C) Do not disassemble motor unit. Tampering with motor unit will result in voided warranty.
- (D) Do not pull drapery manually with excessive force.
- (E) Do not hang on drapery.
- (F) If you experience operational problems, see Programming and Operating Instructions.
- (G) In the event of any problems with the motor curtain track system, immediately stop the operation and disconnect the power to the motor unit. Contact the nearest SOMFY dealer or the service technician.

**SOMFY SYSTEMS, INC.
NORTH AMERICA HEADQUARTERS**

47 COMMERCE DRIVE
CRANBURY NJ 08512
(P) 800 222 SOMFY
(P) 609 395 1300
(F) 609 395 1776

SOMFY FLORIDA

6100 BROKEN SOUND PKWY
NORTHWEST SUITE 14
BOCA RATON, FL 33487
(P) 877 227 6639
(P) 561 995 0335
(F) 561 995 7502

SOMFY CALIFORNIA

15291 BARRANCA PKWY
IRVINE, CA 92618
(P) 877 727 6639
(F) 949 727 3775

SOMFY CANADA

6315 SHAWSON DRIVE UNIT 1
MISSISSAUGA, ONTARIO L5T1J2
(P) 800 667 6639
(P) 905 564 6446
(F) 905 564 2679

SOMFY MEXICO, S.A. de C.V.

TERMAZCAL 19-B, LA LOMA
TLALNEPANTLA, EDO de MEX,
54130, MEXICO
(P) 52 55 5390 5664
(F) 52 55 5390 5530

www.somfysystems.com

SOMFY SYSTEMS, 2005

HOME
MOTION BY

somfy.